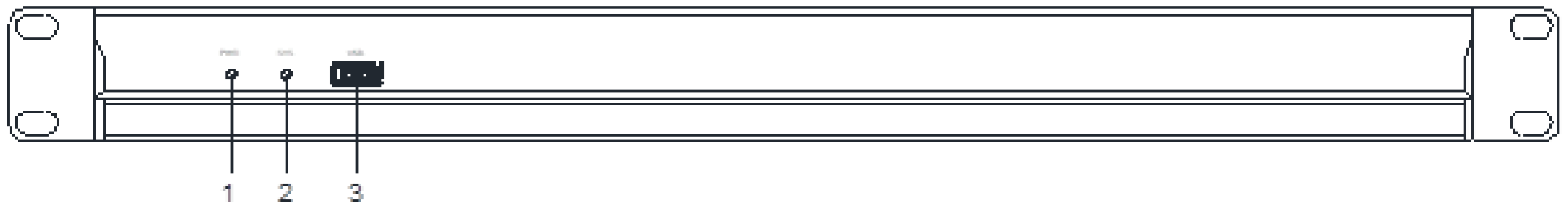


SPECIFICATIONS:

Model	OT9842H OT9843H OT9844H
Maximum Number of Inputs	16
Maximum Number of Outputs	16
Number of 232 Serial Port	1
Number of 485 Serial Port	1
Number of GPIO	8, freely configurable I/O
Number of RJ45	1
Number of USB	1, support recording and broadcasting
Maximum Analog Gain	-60dB
Phantom Power	48V
Input-output Quantization	48KHz/24bit
A/D Dynamic Range	120dB
Input CMRR	80 dB @ +24dBu @60Hz
Input Impedance	20kΩ balance, 10kΩ unbalance
Maximum Input	24dBu
D/A Dynamic Range	120dB
Channel Isolation	100dB
Frequency Response	20~20kHz (±0.25dB)
THD (THD+N)	≤0.002% @1kHz, +4dBu
Output Impedance	100 Ω balance, 50 unbalance
Maximum Output	24dBu
Working Power	AC110V-220V/50Hz
Working Temperature	0~40°C
Package Dimensions (mm)	567×377×98
Machine Dimensions (mm)	483×270×44
Gross Weight	3.2kg
Net Weight	2.15kg

FRONT / REAR PANEL:

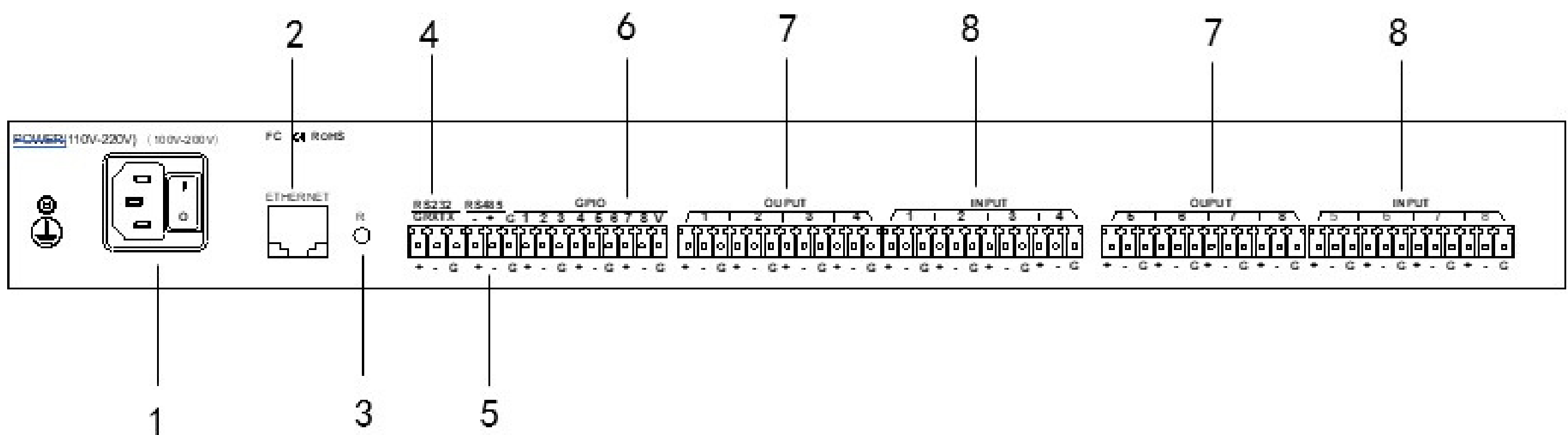
FRONT PANEL



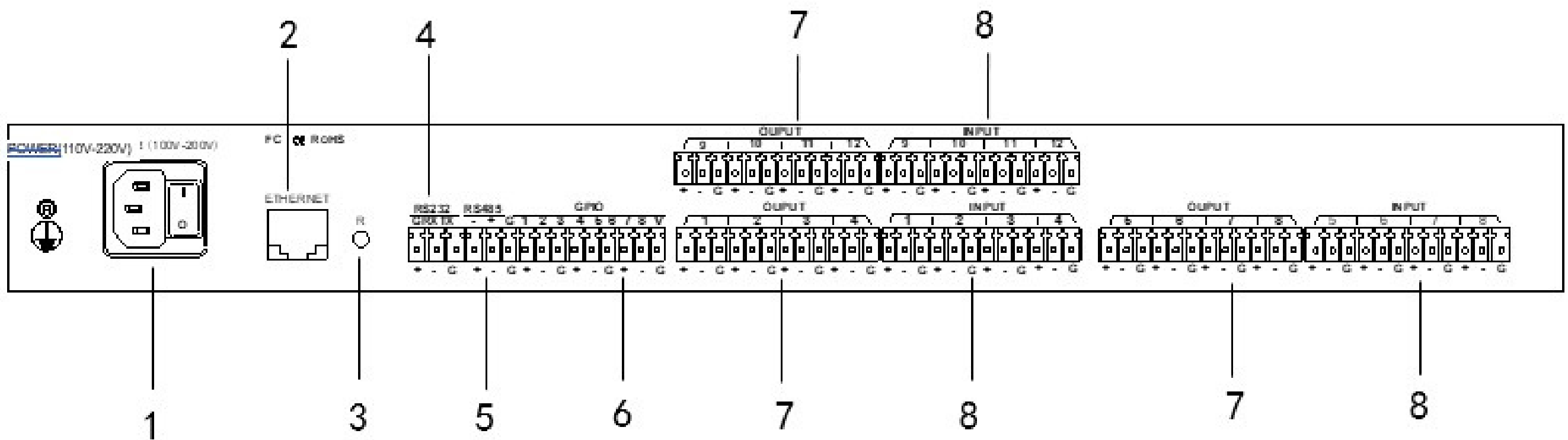
- (1) PWR: POWER INDICATOR. WHEN THE LIGHT IS ON, IT REPRESENTS THE POWER SUPPLY IS NORMAL. WHEN THE LIGHT OFF, IT REPRESENTS THE DEVICE POWER SUPPLY ABNORMAL;
- (2) SYS:STATUS INDICATOR. WHEN THE LIGHT IS FLASHING, IT REPRESENTS THE EQUIPMENT IS UNDER NORMAL OPERATION CONDITION, OTHERWISE THE EQUIPMENT IS FAILURE;
- (3) USB:SUPPORT RECORDING AND BROADCASTING FUNCTION;

RREAR PANEL

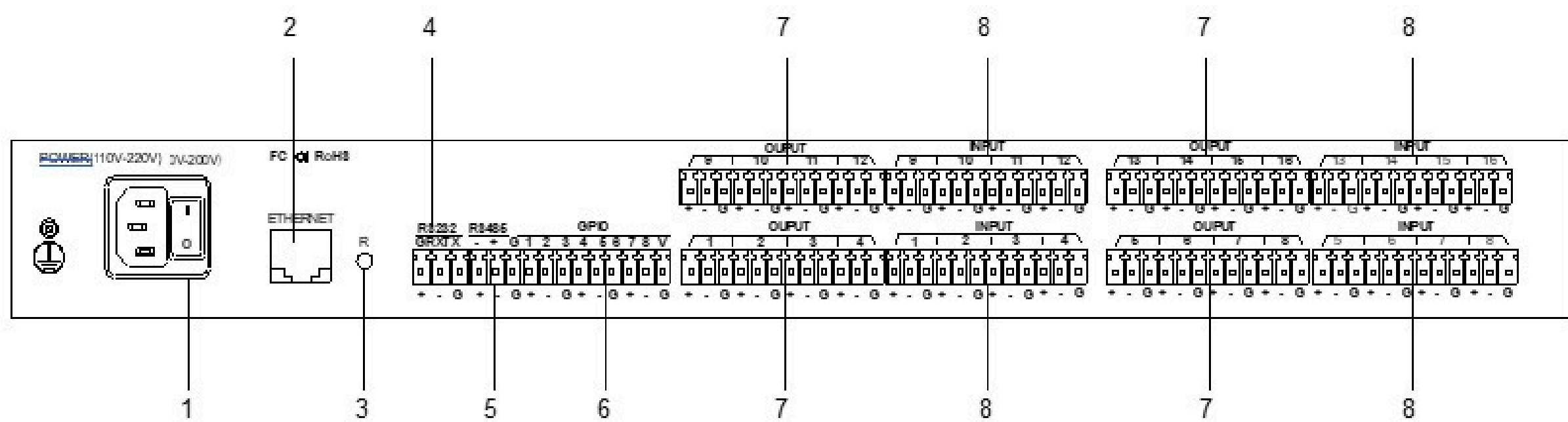
OT9842H REAR PANEL



OT9843H REAR PANEL



OT9844H REAR PANEL



- (1) POWER: POWER PLUG AND SWITCH BUTTON, SUPPORT AC 110V ~ 220V POWER SUPPLY, 50HZ.
- (2) ETHERNET: A NETWORK INTERFACE CONNECTED TO THE PC, ONLINE EDITING, SENDING AND RECEIVING CONTROL FOR COMMAND.
- (3) RSET: SYSTEM RESET BUTTON.
- (4) RS232: COMMUNICATION INTERFACE CONNECTING THE EXTERNAL CONTROL EQUIPMENT / SUPPORTING +CAMERA TRACKING.
- (5) RS485: SUPPORT CAMERA TRACKING.
- (6) GPIO: COMMAND RE-SENDING. REFER TO THE GPIO SETTINGS FOR THE SPECIFIC CONNECTION.
- (7) OUTPUT: ANALOG AUDIO OUTPUT INTERFACE.
- (8) INPUT: ANALOG AUDIO MIC \ LINE INPUT INTERFACE.